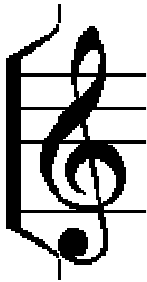


SCORE READING 101

(What IS Nav talking about and what the hell are all the Morse code hieroglyphics on these pages ?!)

Identifying the lines of the staves – first we need ‘reference points’.

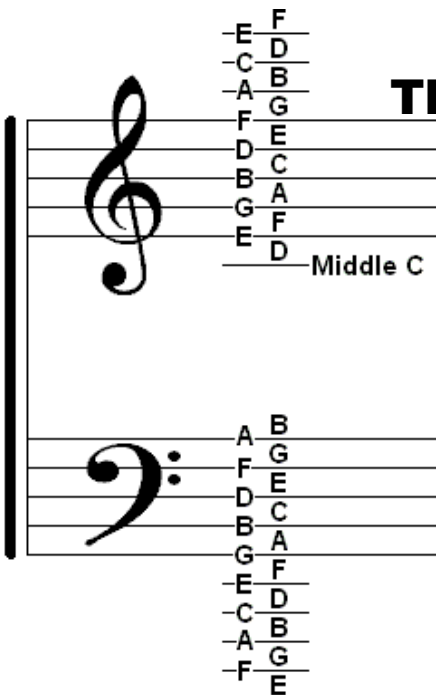


TREBLE (or G) CLEF (also ‘Sol’ Clef)

The inner swirl used to have a dot that marked the second line up as the note G. (It’s generally not printed anymore, but is where you start drawing this clef.)

(‘Fa’ Clef) BASS (or F) CLEF

The inner dot marks the second line down as the note F (the two dots go on either side of the same ‘F’ line; the one below on an ‘E’ and the above on a ‘G’)



Then we can name all the notes...

Remember the two staves used to be linked up with the ‘Middle C’ line as the full length middle line forming 11 lines. But that was very space consuming and pointless as a Soprano can’t sing on the bottom end and vice versa for a bass.

Lots of acronyms exist to help you remember the lines and spaces of each clef (always reading from the bottom of the clef up):

Treble Clef Lines: Every Good Boy Deserves Football

Treble Clef Spaces: These just spell ‘F A C E’

Bass Clef Lines: Good Boys Deserve Football Always

Bass Clef Spaces: All Cows Eat Grass

Finally, we can apply

these to the keys on a piano like this:
(the pattern of notes continues up and down the piano. The C is always just to the left of the two black note grouping. ‘Middle C’ is the one nearest the middle of the piano)

