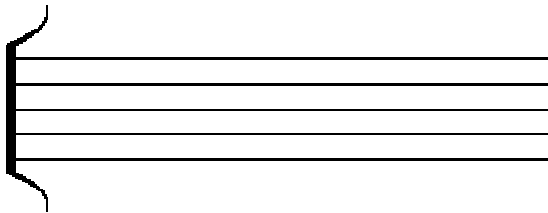


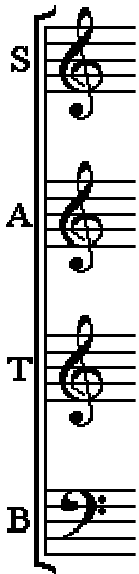
SCORE READING 101

(What IS Nav talking about and what the hell are all the Morse code hieroglyphics on these pages ?!)

Score = the paper on which music is notated to be read by other musicians.



We use 5 parallel lines to write our notation on. We call it a **STAVE** (Staff in other countries).

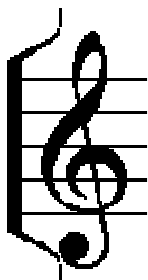


One staff is good enough for one voice/instrument. In choir we've got several voices singing together simultaneously, so we band together as many staves as we need and then title them at the beginning. We also BRACKET them together at the beginning like this:

All of them bracketed together are called a **SYSTEM**.

S = Soprano, A = Alto, T = Tenor, B = Bass
Instruments might title them 'violin' or 'trumpet' etc.

To help us fix how high or low the pitches that any staff will deal with will be we use **CLEF** symbols. We are going to use mainly two:



TREBLE CLEF (Sol Clef in other countries)

The higher of the pitch ranges (Sopranos high up on it and Altos lower down on it)

(Fa Clef in other countries) **BASS CLEF**

The higher of the pitch ranges (Tenors high up on it and Basses lower down on it)

